



# Līpoa Road Solar

Virtual Community Outreach Meeting  
January 18, 2023

REVOLUTIONIZING THE  
FUTURE OF CLEAN ENERGY

NEXAMP 2023

NEXAMP.COM

# Today's presentation includes

- **Mike Billet**  
Nexamp, Director Business Development
- **Keith Hevenor**  
Nexamp, Communication Manager
- **Teena Rasmussen**  
Skog Rasmussen, LLC
- **Jeanne Unemori Skog**  
Skog Rasmussen, LLC



# AGENDA

1. Who is Nexamp?

2. What is Shared Solar aka Community Solar?

3. What is the Līpoa Solar Project?

4. Next Steps





# The Nexamp Story

WHO IS  
NEXAMP?





# The Nexamp Way

WHO IS  
NEXAMP?



At Nexamp, we're revolutionizing the future of clean energy. We work with communities, businesses, and municipalities to democratize clean energy and support U.S. energy independence.

- Nexamp was founded in 2007
- We Own, Operate, and Maintain all of our solar and storage projects and manage every stage of the process
- Our mission is to ensure equity, accessibility, and transparency through a vertically integrated model
- We're building the future of energy so it's clean, simple, and accessible for everyone





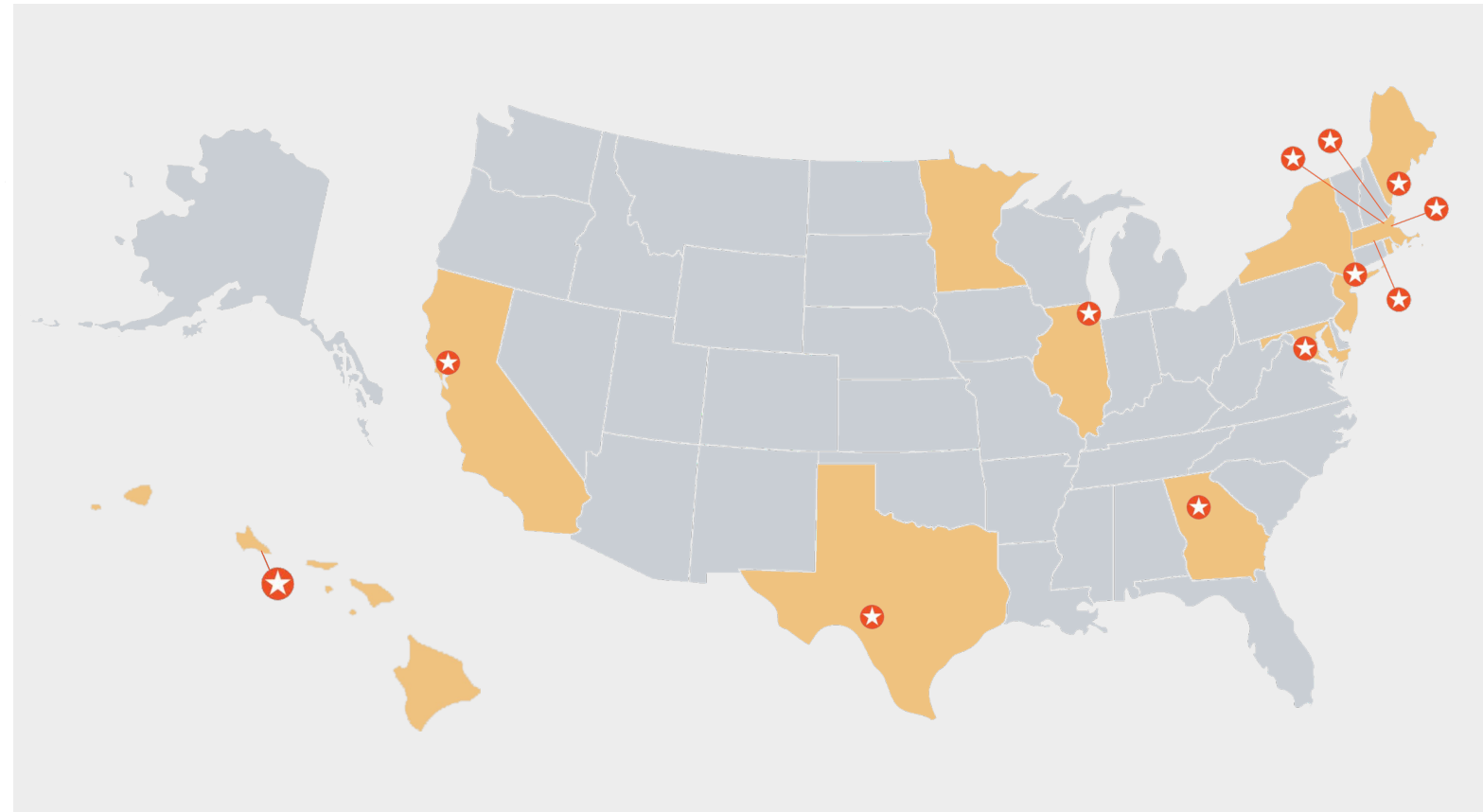
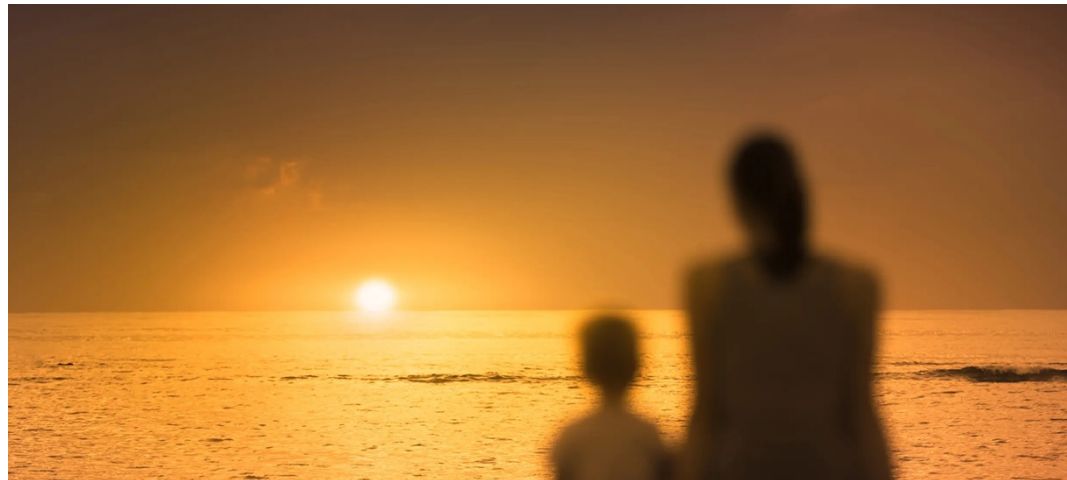
# Our People

Today, over 425 Nexampers are building the future of energy!



# Our Locations

WHO IS  
NEXAMP?




Nexamp is harnessing positive power and funneling it back into communities across the country. As one of the largest solar developers in the U.S., we're maximizing our social and environmental impact daily.

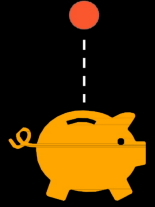
- We're a national, vertically integrated solar energy and storage company headquartered in Boston
- We develop, manage, and maintain community solar farms nationally
- We lead with inclusivity and equity, it is the foundation of our business model

# Delivering Results and Making an Impact

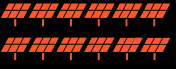
WHO IS  
NEXAMP?

a growing number of  
direct energy customers:  
**50,000+**




  
**12.5%**  
average annual savings  
per community solar customer

**1.15+** million  
solar modules  
deployed




 **420**  
gigawatt hours  
being produced on all  
Nexamp farms


**300,000**  
metric tons  
of CO<sub>2</sub>  
averted



+282% growth since 2018  
**1GW** operational  
and  
construction  
projects



+372% growth since 2018  
**400MW**  
distributed generation



 **250+**  
completed  
projects

**TOP SOLAR  
CONTRACTOR**  
 9 years running

**A+**   
rating on BBB

**200%**  
employee growth







# AGENDA

1. Who is Nexamp?

2. What is Shared Solar?

3. What is the Līpoa Solar Project?

4. Next Steps



# History of Hawaii Shared Solar

<https://energy.hawaii.gov/get-engaged/community-based-renewable-energy/>

**“to make the benefits of renewable energy generation more accessible to a greater number” of Hawai‘i residents and businesses who would otherwise be unable to directly participate in renewable energy generation...”**

**March 17, 2022**

Hawaiian Electric issued a Request for Proposals for Community-Based Renewable Energy Projects for Low-And Moderate-Income customers for the islands of Oahu, Maui, and Hawaii

**November 22, 2022**

Hawaiian Electric awarded Nexamp 7 solar projects to benefit low- and moderate-income customers on Oahu, Maui, and Hawaii Island



| <b>Island</b> | <b>Project</b>            | <b>Megawatt Capacity (AC)</b> |
|---------------|---------------------------|-------------------------------|
| Oahu          | <u>Kaukonahua Solar</u>   | 6 MW (Solar Only)             |
| Maui          | <u>Lipoa Solar</u>        | 3 MW + Battery                |
| Maui          | <u>Makawao Solar</u>      | 2.5 MW + Battery              |
| Maui          | <u>Piihola Road Solar</u> | 2.5 MW + Battery              |
| Hawaii Island | <u>Kalaoa Solar A</u>     | 3 MW + Battery                |
| Hawaii Island | <u>Kalaoa Solar B</u>     | 3 MW + Battery                |
| Hawaii Island | <u>Naalehu Solar</u>      | 3 MW + Battery                |

# Shared Solar for Hawaii

## What is Shared Solar?

- Shared solar allows customers to take part in the solar energy movement and reduce their electric bills
- It benefits customers who until now have been unable to participate in solar energy
- Initial preference in this round will be given to projects serving low- to moderate-income (LMI) customers
- Projects from the next round of Shared Solar will be open to all customers
- All projects Support Hawaii's Clean Energy Initiative of 100% Renewable Energy by 2045

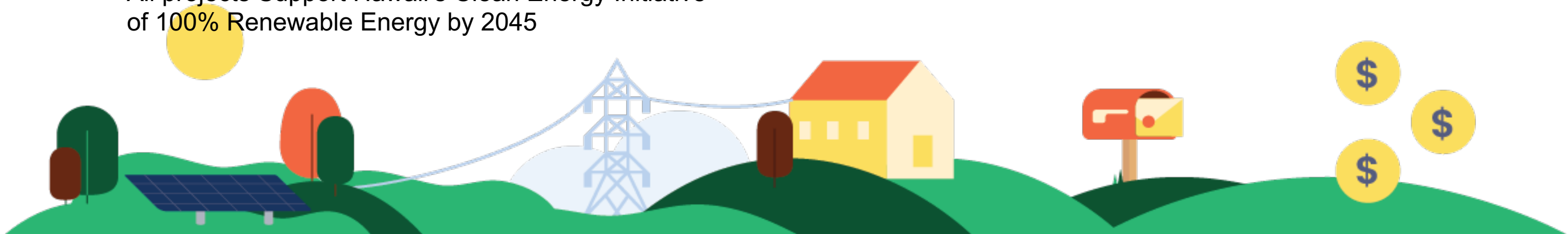
## How the program works

Nexamp awarded capacity to build a shared solar project and approved

Once the project is approved and built, Hawaiian Electric customers on the same island can participate in the Nexamp program

Shared solar subscribers receive a credit that lowers their electric bills for a portion of the renewable electricity generated by that project

Subscribers save up to 15% on energy costs



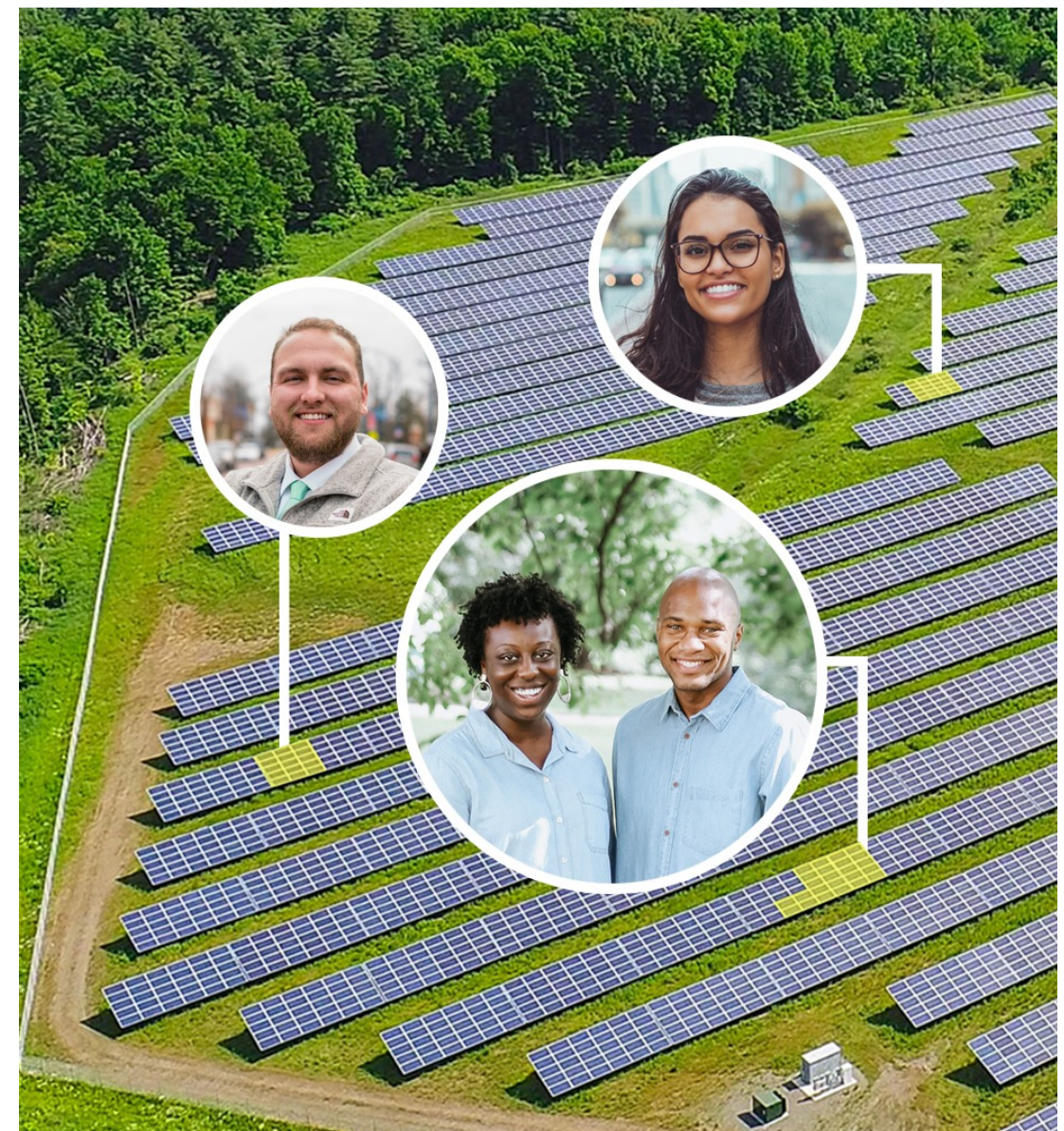


# Shared Solar

WHAT IS  
SHARED SOLAR?

We're lowering barriers and unlocking clean energy for communities across the country. We believe that access to clean energy is a right, not a privilege, and are committed to making solar power flexible and accessible to all.

- ✓ No rooftop panels
- ✓ No upfront cost
- ✓ No credit checks
- ✓ No long-term contracts
- ✓ No need to own your home
- ✓ Savings for everyone





# Nexamp Shared Solar 101

WHAT IS  
SHARED SOLAR?



## How to Qualify?

### (3) ways to qualify as a Residential LMI Customer

1. Household's income must be equal to or less than the income limit established by HUD for the customer's household size in the appropriate county
2. Participant in a qualified government assistance program
3. A person residing in any zip code identified by Hawaii Energy as qualifying for LMI status

### (3) Ways to qualify as a Non-Profit or small business

1. A city, county, state or federal governmental agency; or
2. An IRC Section 501(c)(3) organization; or
3. A participant in the Energy Advantage program within the Affordability and Accessibility program established by Hawaii Energy for certain small businesses and restaurants

## How do I Apply?

1. Go to Hawaiian Electric's CBRE Portal: <https://communityenergyhawaii.com/>
2. LMI customers – including those who are renters and apartment residents – may become "subscribers" to a facility on their respective island. Priority for the 1<sup>st</sup> (3) months to customers within a 5-mile radius of Project.
3. Once the projects are built and online, the subscribers receive credits on their monthly electricity bill based on their level of participation.
4. Participation levels are based on your Hawaiian Electric account historic energy usage.



# AGENDA

1. Who is Nexamp?
2. What is Shared Solar?
3. What is the Līpoa Solar Project?
4. Next Steps







## Līpoa Solar

<https://www.nexamp.com/lipoa-solar>

- The project is located off Pi'ilani Hwy and Līpoa Parkway in Kihei
- PV system size is 3 MW AC + Battery
- The project has the capacity to service more than **500\*** homes and **30\*** nonprofit anchor tenants
- Nexamp is offering priority subscription to residents within a 5-mile radius of the Hawaii Census Tract for the first 3 months
- Initial Environmental and Cultural due diligence included a desk top review of the land
- Detailed Environmental and Cultural Impact Studies will be completed as prior to the permitting approval process
- Nexamp has a Decommission Plan to recycle all equipment and restore the land to its natural state



# Project Location

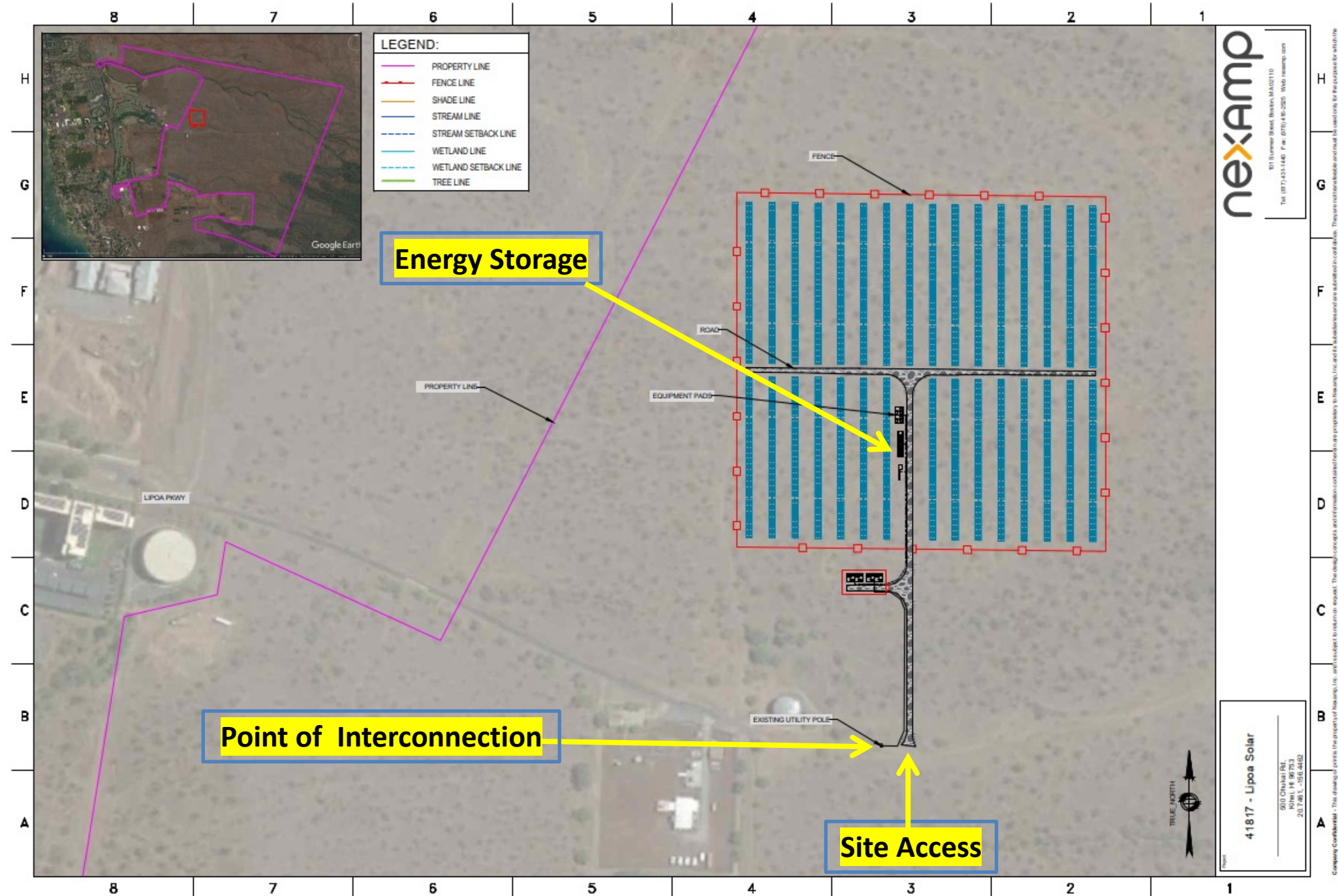
WHAT IS THE  
LIPOA SOLAR PROJECT?





# Project Design

WHAT IS THE LIPOA SOLAR PROJECT?



**Project Acreage**  
20.950 ACRES

**Parcel Acreage**  
2254.764 ACRES

**Project/Parcel**  
~1%



# Project Benefits

## **Better Environmental Quality**

- Clean Renewable Energy and Storage
- Contributes to Hawaii's Clean Energy Initiative goal of 100% renewables by 2045
- Mitigates impacts of Climate Change
- Increases Grid Stability

## **Better Economic Sustainability**

- Savings for LMI Residential Subscribers
- Savings for Non-Profit Subscribers
- Local Labor Commitment

## **Reliable Partner**

- Nexamp will finance, construct, operate and maintain the project throughout the 20-year term
- Nexamp will provide customer service & enrollment support throughout the 20-year term

# Community Benefits

- Cleaner, more resilient grid
- Supporting residents & business
- Reliable long-term partner
- Low-impact use that conserves land
- Community benefits package



# Required Government Permits and Approvals

The proposed 20-acre project is planned on a portion of 2200-acres of land on a parcel located off Lipoa Parkway, Kihei, Maui, Hawaii. The parcel is zoned Agricultural, Land Study Bureau (LSB) Productivity Class Rating of 'E'

| Permit Approval Type                                   | Purpose  | Approving Agency                                       |
|--|--|--|
| Grading and Grubbing Permit                            | Clearing and grading of site, site roads, and erosion and sediment control         | County of Maui, DPW                                    |
| Building and Electrical Permit                         | Construction of solar equipment and pads for support facilities                    | County of Maui, DPW, Building Division                 |
| Storm Water General Permit for Construction Activities | Disturbance greater 1-acre for water quality protection                            | State of Hawaii, Clean Water Branch                    |
| Historic, Cultural and Natural Resource Review         | Obtain concurrence on potential effects of cultural, natural and historic elements | DLNR, SHPD   |
| Community Noise Permit for Construction activities     | Noise exceedances greater than allowable decibels                                  | State of Hawaii, Indoor and Radiological Health Branch |

# Environmental Impacts

## Preliminary Environmental Assessment Summary of Potential Effects

- Natural Environment  
Air Quality – Biological Resources – Climate –  
Soils – Topography – Geology
- Land Regulations
- Socio-Economic Characteristics
- Solid Waste
- Hazardous Materials
- Water Quality
- Public Safety Services
- Recreational Resources
- Potential Cumulative and Secondary  
Impacts



## Cultural Impacts

There is an abundance of dry-land agricultural features in the areas behind Kihei, Wailea, and Makena--likely more so to the south of Kihei.

There are also historic ranch walls and other structures probably associated with Ulupalakua Ranch.

## State Historic Preservation Division (SHPD) Process

- Historic preservation review
- PCSI will complete an Archaeological Literature Review with Field Inspection (ALRFI)
- SHPD “Determination of Effect” letter:
  - ➔ No effect with no additional work required
  - ➔ Effect with additional historic preservation effort needed
  - ➔ Archaeological monitoring during construction
  - ➔ Archaeological inventory survey prior to construction
  - ➔ Historic preservation plan, etc.

# The Nexamp Way

WHAT IS THE  
LIPOA SOLAR PROJECT?

We're a vertically integrated organization that manages each phase of the project to ensure consistent and repeatable results.





# Project Timeline

WHAT IS THE  
LIPOA SOLAR PROJECT?





# AGENDA

1. Who is Nexamp?
2. What is Shared Solar?
3. What is the Līpoa Solar Project?
4. Next Steps





# Next Steps

| <b>Project Development<br/>Initial Public Meeting<br/>January 2023</b> | <b>Project Development<br/>Public Meeting 2<br/>April 2023</b> | <b>Pre-Construction<br/>Public Meeting 3<br/>July 2023</b> | <b>Pre - Construction<br/>Public Meeting 4<br/>October 2023</b> |
|--|--|--|---|
| Where to find more information   | Project Status Updates:  | Project Status Updates:                                    | Project Status Updates:   |
| How to contact us  | Interconnection Studies IRS                                    | Interconnection Studies IRS                                | Interconnection Studies IRS                                     |
| Community Outreach   | Environmental  | Environmental  | Environmental   |
| Community Feedback Recording to PUC                                    | SHPD   | SHPD   | SHPD  |
| PPA Negotiations   | PPA  | PPA Executed   | Engineering   |
| Submit for PUC Approval  | PUC Approval   | PUC Approval   | Permitting  |
| Start Land Studies   | Community Benefits Package                                     | Community Benefits Package                                 | Community Benefits Package                                      |
| SHPD (HRS) 6E historic preservation review                             | Community Feedback   | Community Feedback   | Community Feedback  |



## Contact Us

---

1050 Queen Street, Suite 100  
Honolulu, Hawaii 96814

---

[lipoasolar@nexamp.com](mailto:lipoasolar@nexamp.com)

---

[www.nexamp.com](http://www.nexamp.com)

---





## Contact Us

---

1050 Queen Street, Suite 100  
Honolulu, Hawaii 96814

---

[lipoasolar@nexamp.com](mailto:lipoasolar@nexamp.com)

---

[www.nexamp.com](http://www.nexamp.com)

---